

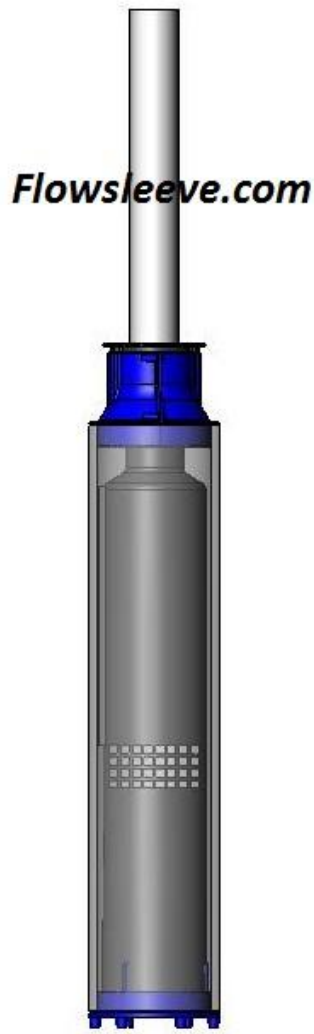
Patent Pending

Flowsleeve.com

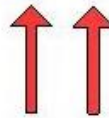
Flow Sleeve assembly Instructions:

Correct

Wrong

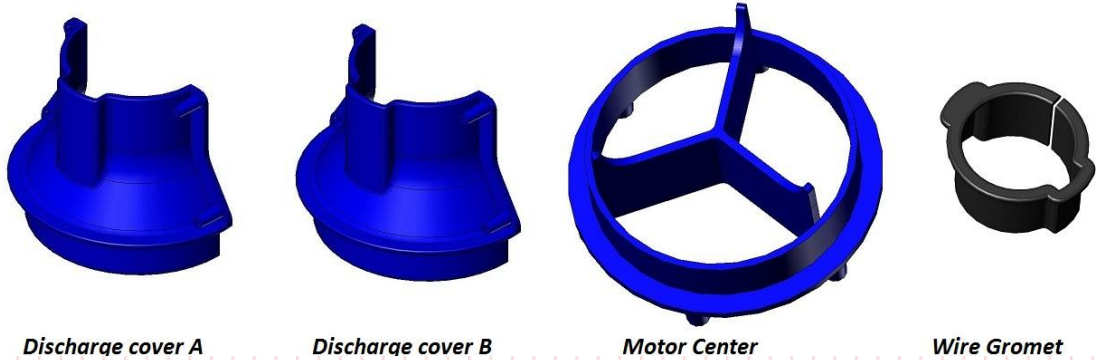


Improper installation no sleeve leaving no flow over the motor leading to overheating and premature pump failure.



Directs flow over motor cooling motor properly

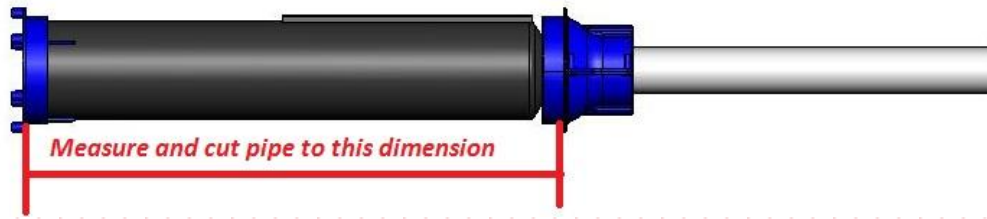
1. Assemble Pump motor, and splices as per manufacture Instructions.



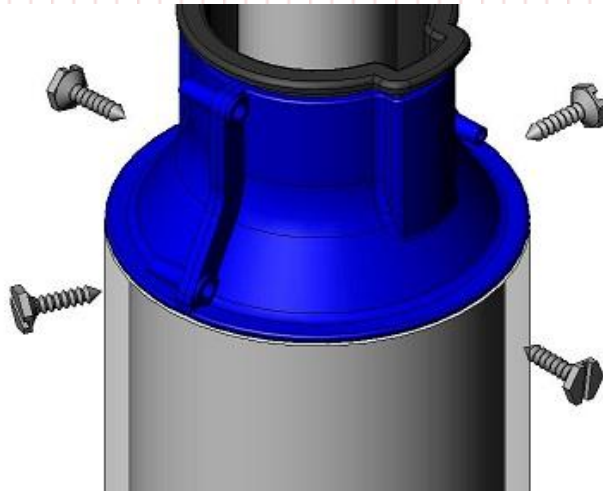
2. Attach any safety roper, cables or liquid level probes to pipe and secure them in place.
3. Open parts bag of the Flow Sleeve and lay out the parts. Check contents against parts list.
4. Place part A and Part B around the top of the pump discharge. Cut out extra cable notch in grommet if needed for safety rope, probe wires etc... Install 4 each stainless steel screws tighten in place. Verify that sub cable is not pinched or rubbing on Flow Sleeve.



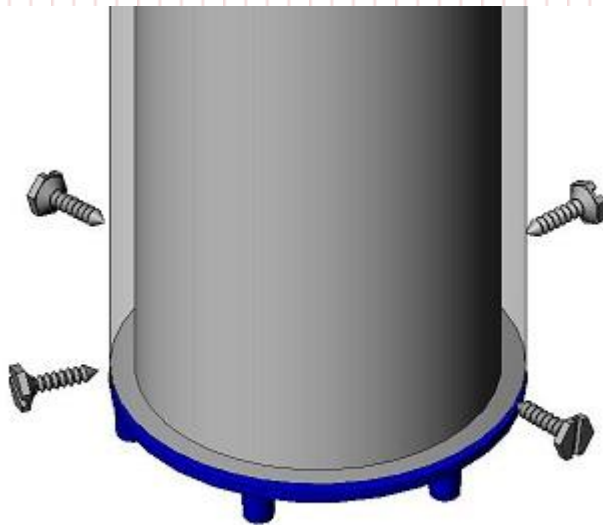
5. Hold part C up to the bottom of the motor and measure between Part C and A&B. Cut length of pipe to this measurement.



6. Slip Pipe over motor and pump assembly up to parts A&B. Hold in place and attach them with 4 each stainless steel screws at the top spaced 90 Degrees apart. Make sure the screws do not penetrate into pump or wiring.



Slip Part D into bottom of pipe centering motor in place. Secure with 4 each Stainless steel screws.



7. Check assembly for security and centering.
8. If necessary install torque arrestor above Flow Sleeve and proceed with pump installation in your well.



Flow .com

Contact us email info@flowsleeve.com Tel 805-441-8265 Paso Robles California 93446